

TURQUESA Homes

Home nº11



PRIVATE PLOT 413m²

TOTAL CONSTRUCTED AREA* 229,68m²

TOTAL USABLE AREA* 163,43m²

(*) Optional basement included



URBANIZATION

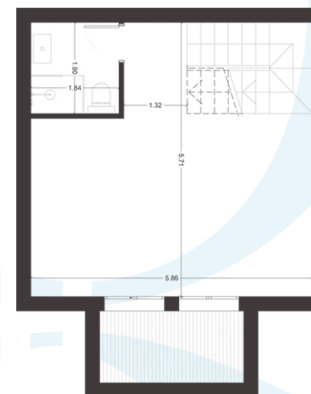
ENTRANCE FLOOR



FIRST FLOOR



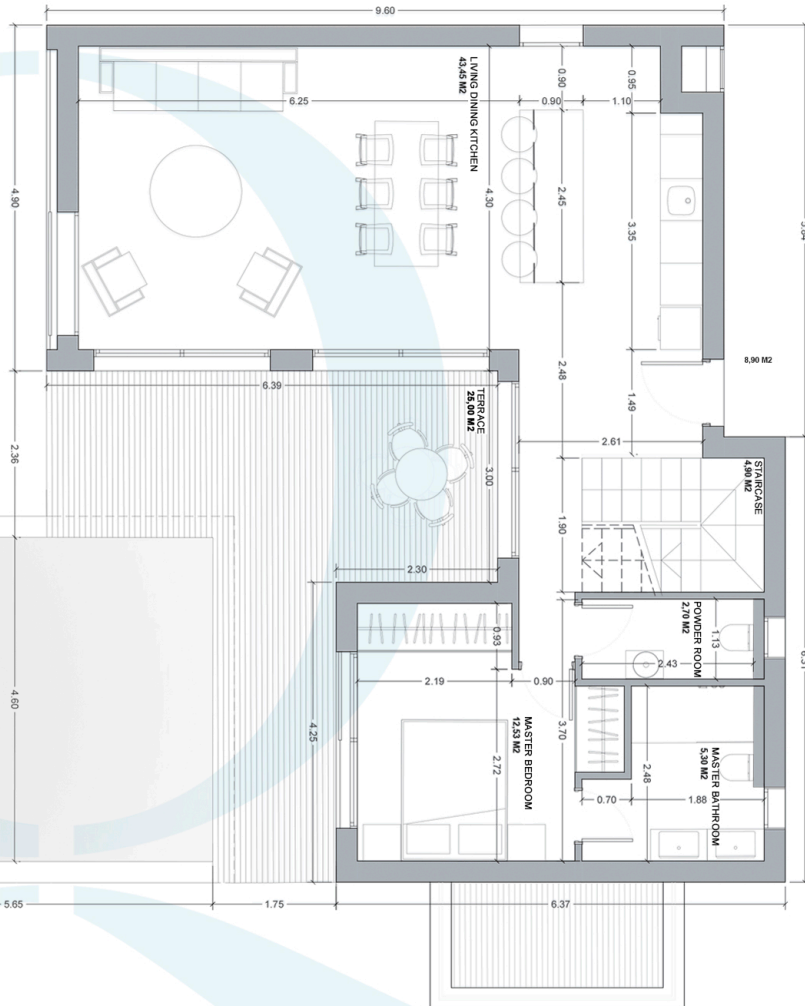
OPTIONAL BASEMENT



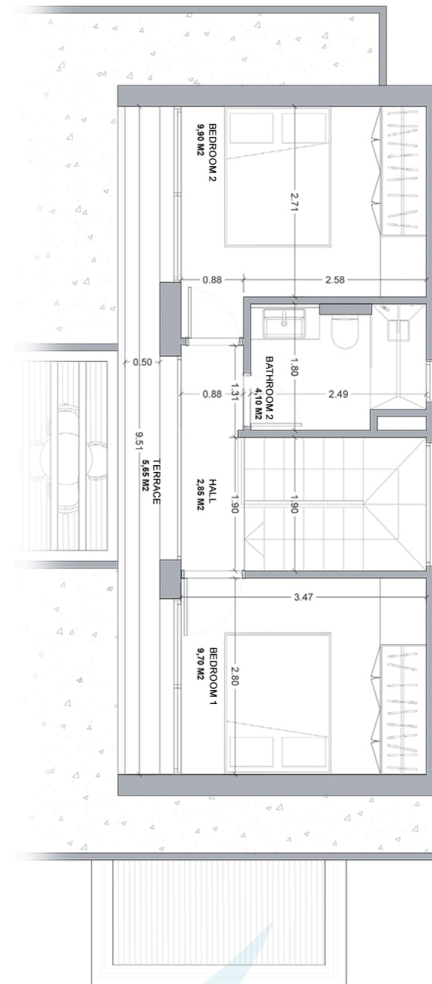
Home n°11



ENTRANCE FLOOR



FIRST FLOOR



PRIVATE PLOT 413m²

CONSTRUCTED AREA* 229,68m²

ENTRANCE FLOOR 85,92m²

FIRST FLOOR 39,50m²

TERRACE ENTRANCE FLOOR 25,00m²

TERRACE FIRST FLOOR 6,00m²

POOL AREA 26,00m²

OPTIONAL BASEMENT 47,26m²

USABLE AREA* 163,43m²

ENTRANCE FLOOR 88,98m²

LIVING DINING KITCHEN 43,45m²

POWDER ROOM 2,70m²

MASTER BEDROOM 12,53m²

MASTER BATHROOM 5,30m²

TERRACE 25,00m²

FIRST FLOOR 36,90m²

STAIRCASE 4,90m²

CORRIDOR 2,65m²

BEDROOM 2 9,70m²

BEDROOM 3 9,90m²

BATHROOM 2 4,10m²

TERRACE 5,65m²

OPTIONAL BASEMENT FLOOR 37,55m²

DIAFANOUS ROOM 24,65m²

BATHROOM 3,50m²

STAIRCASE 4,90m²

ENGLISH PATIO 4,50m²

(*) Optional basement included

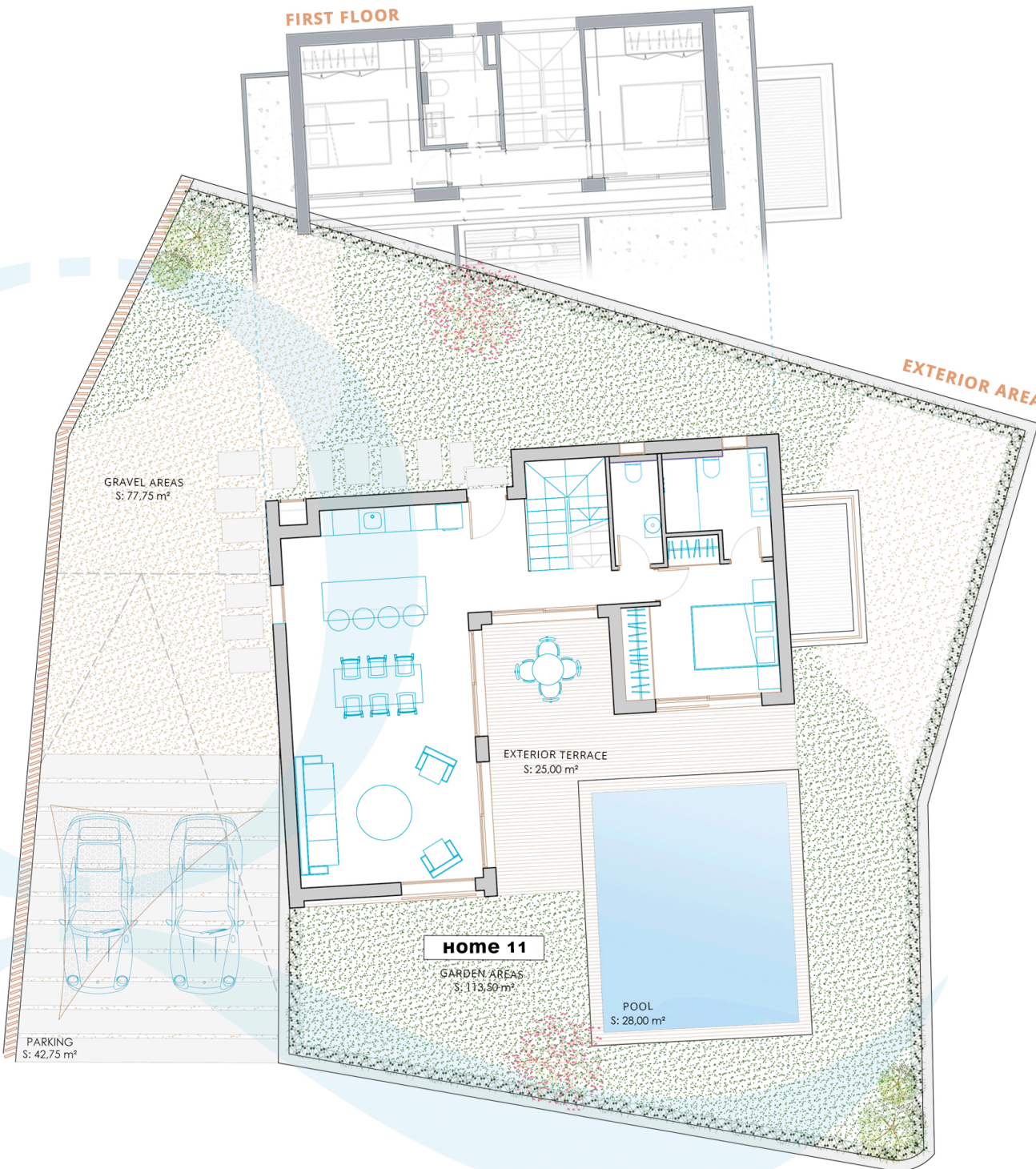
Home nº11



PRIVATE PLOT 413m²

USABLE AREA EXTERIOR 262,00m²

| | |
|-------------|----------------------|
| POOL | 28,00m ² |
| GARDEN AREA | 113,50m ² |
| GRAVEL AREA | 77,75m ² |
| PARKING | 42,75m ² |



We care for
the world by
caring for
your world