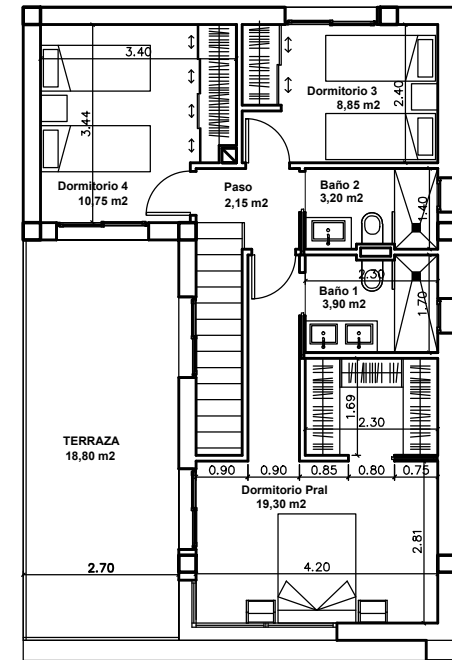
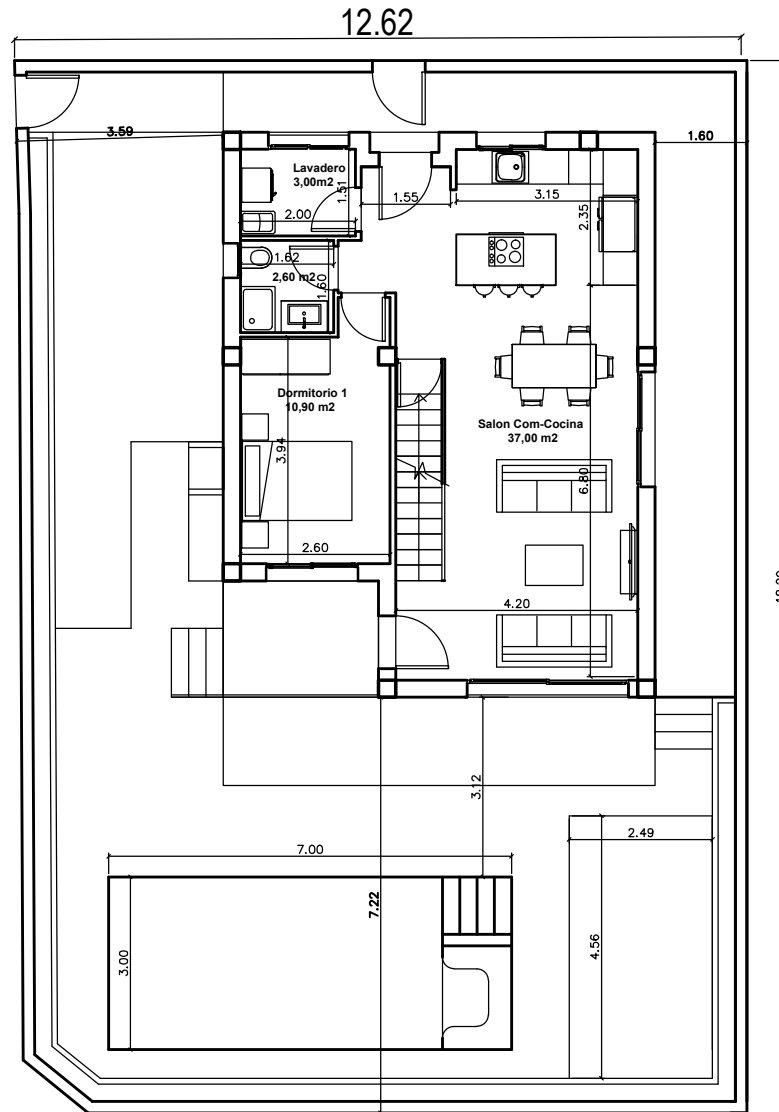
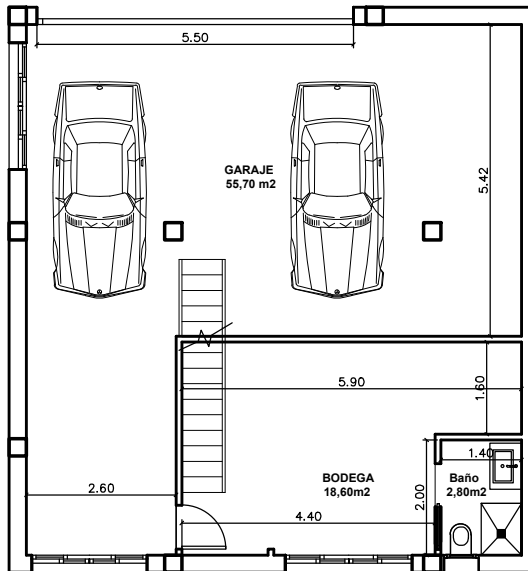


VIVIENDA N° 1



SUPERFICIES CONSTRUIDAS	
PLANTA SOTANO	89,30 m ²
VIVIENDA PL. BAJA	68,00 m ²
VIV. PL. PRIMERA	63,70 m ²
PORCHE (PL. BAJA)	16,90 m ²
TERRAZA (PL. 1ª)	18,80 m ²
TOTAL SUP CONSTR.	256,70 m²

Superficie Parcela 229,00 m²

